

RUSTY CRAYFISH

Orconectes rusticus



Be on the lookout for this invader!



Photo: U.S. Geological Survey Archive, U.S. Geological Survey, Bugwood.org

Description:

Rusty crayfish can generally be identified by their dark, rusty spots on each side of the carapace; the spots appear as though you picked up the crayfish with paint on your forefinger and thumb. Their robust, grayish-green to reddish brown claws have black bands at the tips. They grow to over 4" in length. Rusty crayfish displace native crayfish and reduce aquatic plant diversity and abundance.

Habitat:

Rusty crayfish live in lakes, ponds, and streams preferring areas with rocks, logs and other debris, and with clay, silt, sand or rocky bottoms. They typically inhabit permanent pools and fast moving streams of fresh, nutrient-rich water. They generally do not dig burrows other than small pockets under rocks and debris.

IDENTIFICATION

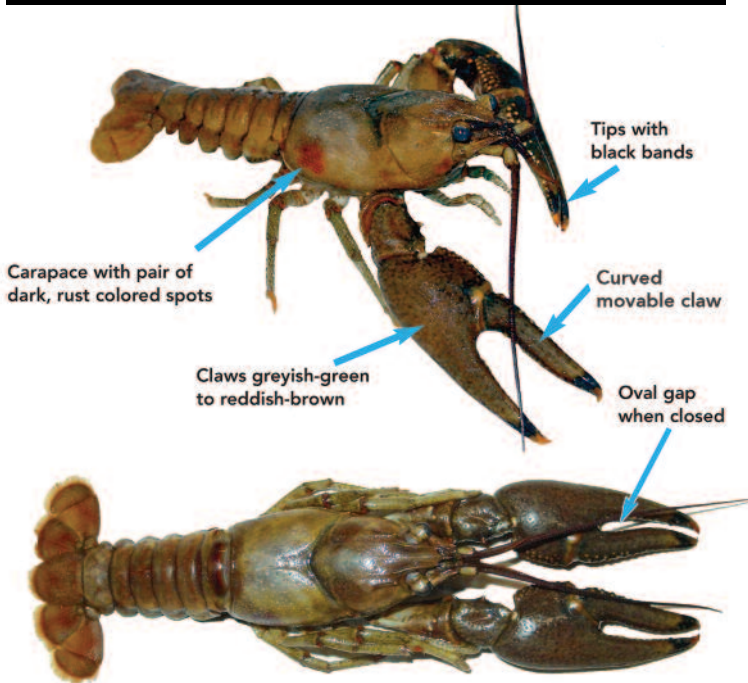


Photo: U.S. Geological Survey Archive, U.S. Geological Survey, Bugwood.org

Known to occur at these locations in Northern Michigan:

- Great Lakes
- Bear River
- Carp River
- Burt Lake
- Lake Charlevoix
- Douglas Lake
- Lower Maple River
- Widespread in the Tip of the Mitt Watershed Council Service area.

(Published 2015)

Tip of the Mitt Watershed Council • www.watershedcouncil.org

Funding for this project provided by: **TheJoyceFoundation**