

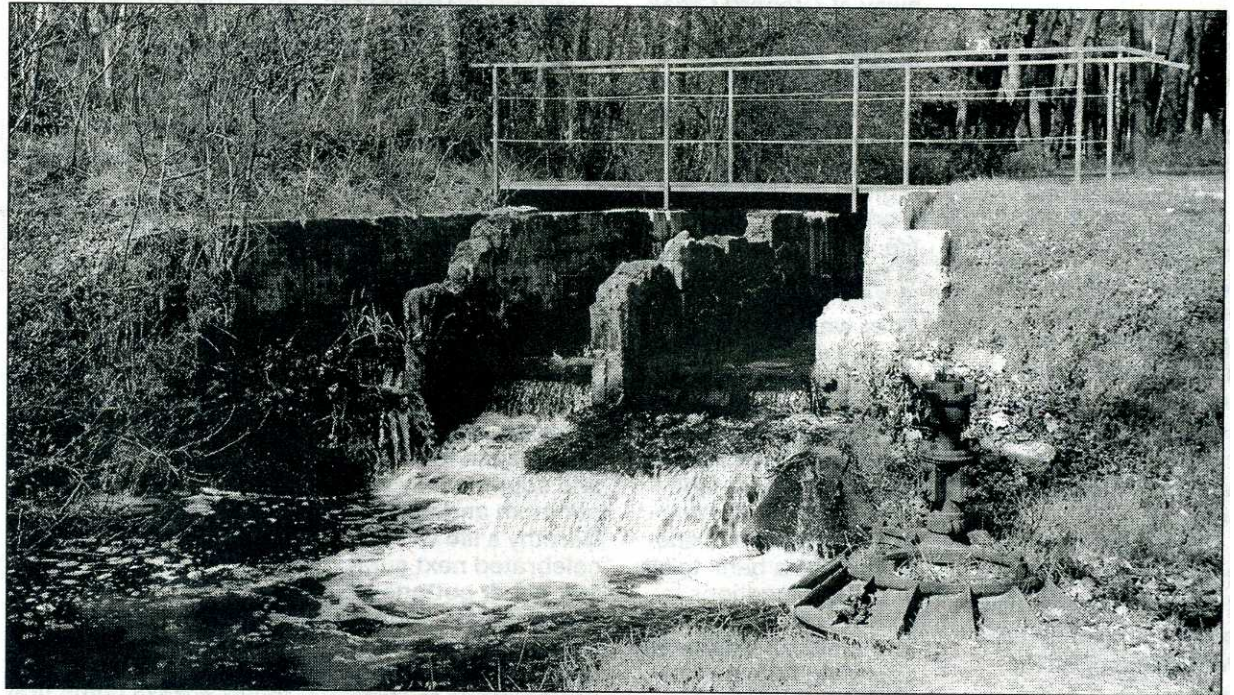
# Preliminary engineering study completed for Stover Creek Dam

CHARLEVOIX — Tip of the Mitt Watershed Council took the first step toward the restoration of the lower stretch of Stover Creek, an important cold water tributary that flows directly into Lake Charlevoix's western basin near the city of Charlevoix.

With support from the Charlevoix County Community Foundation and the Lake Charlevoix Association, Tip of the Mitt Watershed Council contracted with Northwest Design Group to complete a preliminary design for the removal of a small dam at the stream's mouth.

As part of their work, Northwest Design Group assessed the current conditions of the dam and forecast any changes to the stream if the dam is ultimately removed. Northwest Design Group also outlined options for stream restoration immediately up and downstream of the dam.

The study confirms that while not currently impounding flows, the dam serves as a barrier to migration of fish and other aquatic organisms,



COURTESY PHOTO

Tip of the Mitt Watershed Council looks to restore the lower stretch of Stover Creek with the removal of a small dam at the stream's mouth.

effects hydraulics, and may affect stream temperatures. Also, the dam is currently impounding a significant quantity of sediment, which could be detrimental to the stream if it was suddenly released by way of dam failure. The study concluded that its removal would be beneficial to Stover Creek.

Jennifer Buchanan, watershed projects director at Tip of the Mitt Watershed Coun-

cil, is excited about the possibility of seeing the dam removed.

"There has been a desire to remove the dam for quite a long time, but we didn't have the data to move forward," Buchanan said. "Now that we have the preliminary design study, we can seek grants that will support next steps, which would include working with the adjoining landowners, final engineering, removing the struc-

ture and restoring the stream."

The anticipated engineering and construction costs could be close to \$160,000. The Watershed Council will also work with resource agencies to ensure the potential for upstream migration of sea lamprey would be minimized.

The main channel of Stover Creek is 8 miles long and the land area of its watershed encompasses 4,220 acres. In 2012,

the Lake Charlevoix Watershed Management Plan, approved by both the Michigan Department of Environmental Quality and the Environmental Protection Agency, designated the Stover Creek Watershed as one of 16 acute critical areas that need priority attention.

For more information about this project, contact Jennifer Buchanan at (231) 347-1181 or [jen@watershedcouncil.org](mailto:jen@watershedcouncil.org).